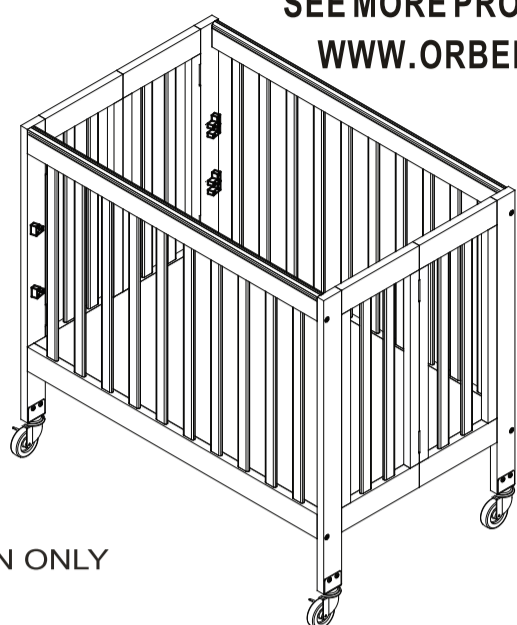




ORBELLE TRADE INC
347 CLINTON STREET
HEMPSTEAD N.Y. 11550
516-481-1500

ROXY PORTABLE CRIB

ORBELLE'S ORIGINAL DESIGN
SEE MORE PRODUCTS AT
WWW.ORBELLE.COM



FOR INSTRUCTION ONLY

ASSEMBLY INSTRUCTIONS

Read all instructions before assembly and use of product. Save instructions for future use.

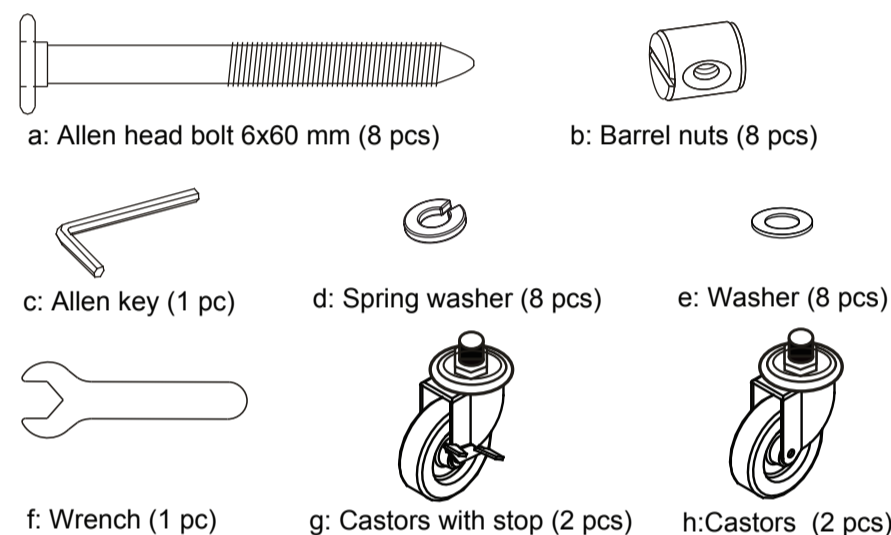
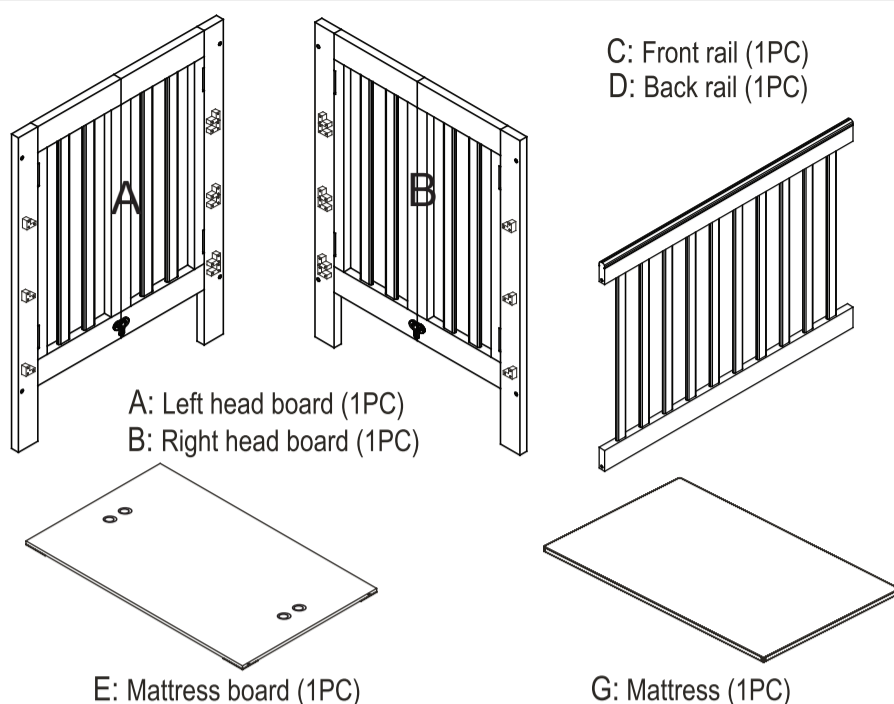
Carefully remove and lay out all parts. Familiarize yourself with all diagrams to facilitate the assembly of your crib. Check parts and the enclosed hardware bag with the hardware parts list to be sure all are included and quantities are correct. Destroy cardboard and plastic bags immediately.

Attention: In order to properly assemble the crib, follow the assembly instructions in the specified order.

Failure to assemble the crib in the manner recommended could make the crib hazardous.

Warning :Never use this product if there are any loose or missing fasteners, loose joints, broken parts, or torn mesh/fabric. check before assembly and periodically during use. Contact ORBELLE for replacement parts and instructional literature if needed.

PART LIST FOR ROXY



! WARNING

****Keep instructions for futher use****

- This product meets or exceeds specifications as issued by the consumer product safety for non-full size baby cribs.
- Caution: Before using this unit recheck all screws to be sure they are tightened securely. a periodic check should be made of all screws&nuts to be sure they remain tight.

! WARNING

****Infants can suffocate****

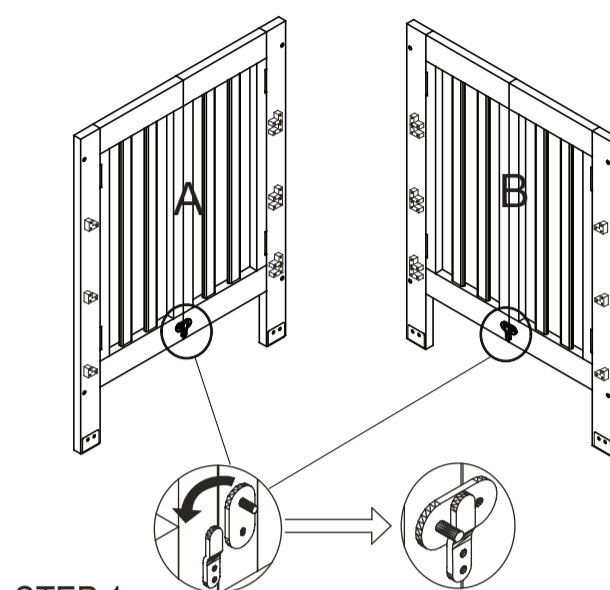
- In gaps between a mattress too small or too thick and product sides.
- On soft bedding never add a pillow or comforter. Never place additional padding under an infant.
- Use up level mattress support only for a new born baby and not more than the first 3 months.

! WARNING

- Failure to follow these warnings and the instructions could result in serious injury or death. Make sure latches are secure.
- Use ONLY mattress/pad provided by manufacturer, which must be at least 37-3/4in.(959mm) long by 23-5/8in.(600mm) wide and not more than 2in.(51mm).
- Child can become entrapped and die when improvised netting or covers are placed on top of product. Never add such items to confine child in product.
- To help prevent strangulation tighten all fasteners. A child can trap parts of the body or clothing on loose fasteners.
- Follow warning on all products in a crib.
- When used for playing, never leave child unattended.
- Do not use plastic shipping bag or other plastic film as mattress covers not sold and intended for that purpose, they can cause suffocation.
- Never use a water mattress with this product, if refinishing, use anontoxic finish specified for children's products.
- Strings can cause strangulation! Never place items with a string around a child's neck, such as hood strings or pacifier cords. Never suspend strings over product or attach strings to toys.
- Discontinue use of the product when child is able to climb out or reaches the height of 35in.(890mm).
- When child is able to pull to standing position, set mattress/base to lowest adjustment position and remove bumper pads, large toys, and other objects that could serve as steps for climbing out.
- Never place product near window where cords from blinds or drapes can strangle a child.
- Always provide the supervision for continued safety of your child.
- To reduce the risk of SIDS, pediatricians recommend healthy infants be placed on their back to sleep, unless otherwise advised by your physician.
- Never use this product if there are any loose or missing fasteners, loose joints, broken parts, or torn mesh/fabric. check before assembly and periodically during use. Contact ORBELLE. for replacement parts and instructional literature if needed.
- Never substitute parts, the product including side rails, must be fully erected prior to use.
- Child can become entrapped and die when improvised netting or covers are placed on top of product. Never add such items to confine child in product.
- When used for playing, never leave child unattended.
- Replace teething rail if damaged, cracked, or loose

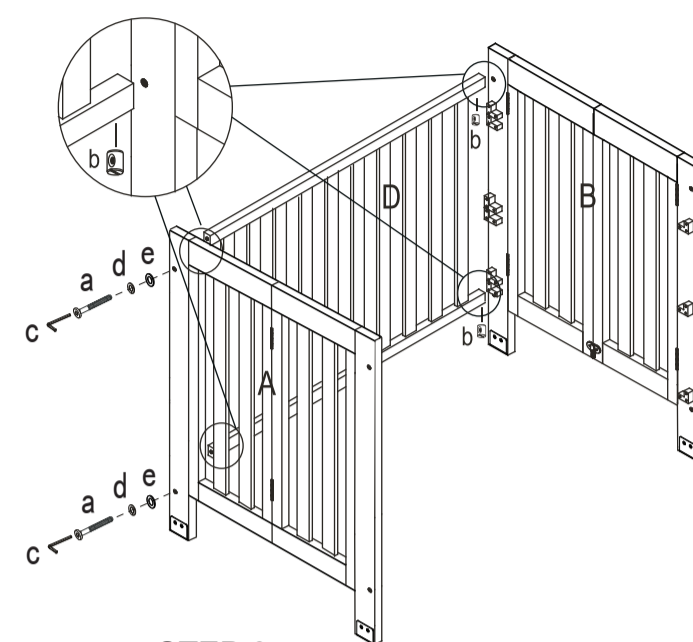
MADE IN CHINA

! WARNING: Any mattress used in this crib must be at least 23-5/8”(600mm) by 37-3/4”(959mm) with a thickness not exceeding 2”(51mm). This crib conforms to applicable regulations promulgated by the consumer product safety commission



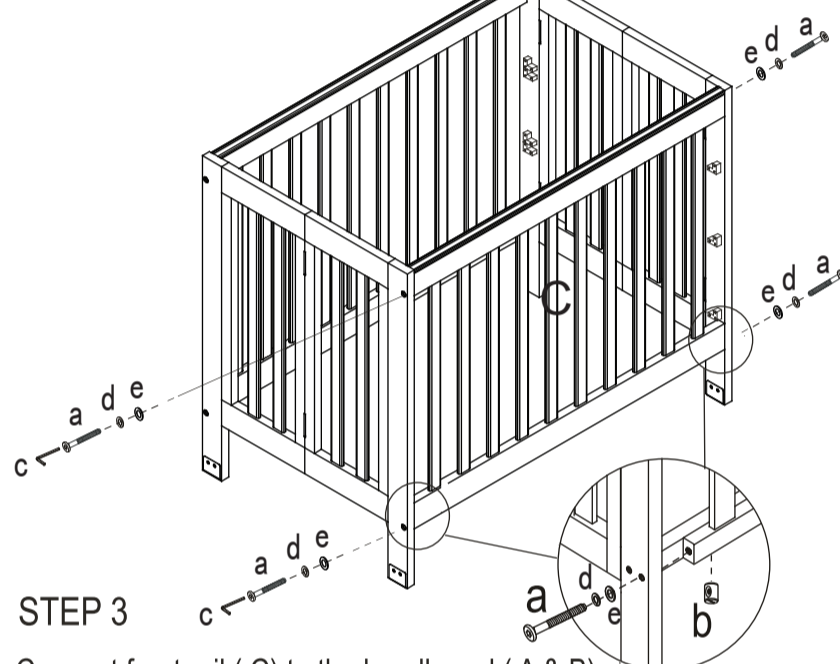
STEP 1

Make sure that the latch on the bottom of each headboard (A & B) are locked.



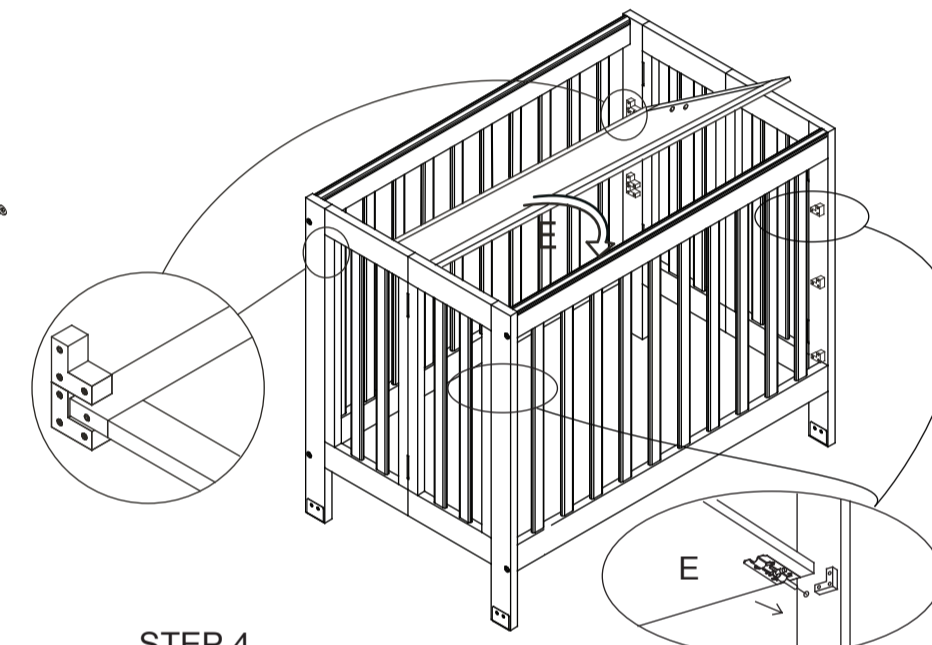
STEP 2

Connect back rail (D) to the headboard (A&B) by screws(a), spring washer(d), washer(e) and barrel nuts(b)



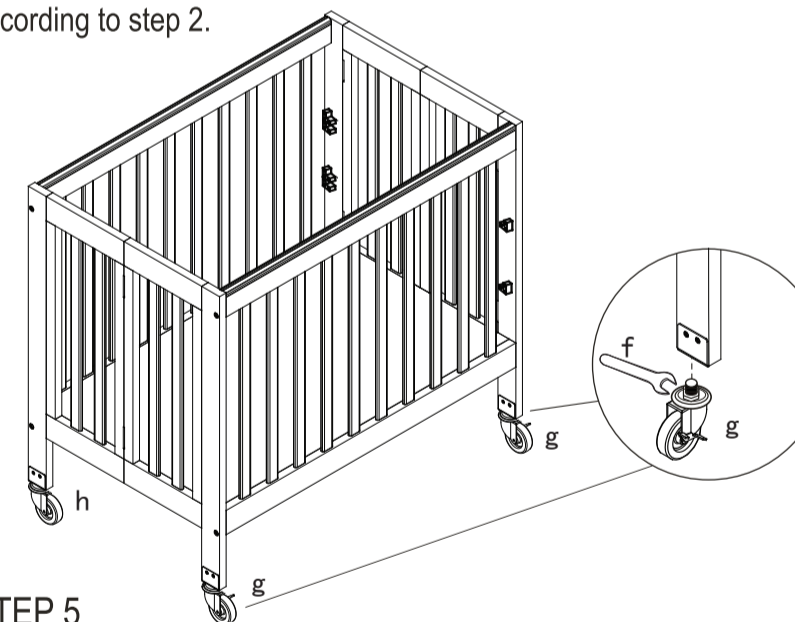
STEP 3

Connect front rail (C) to the headboard (A & B) according to step 2.



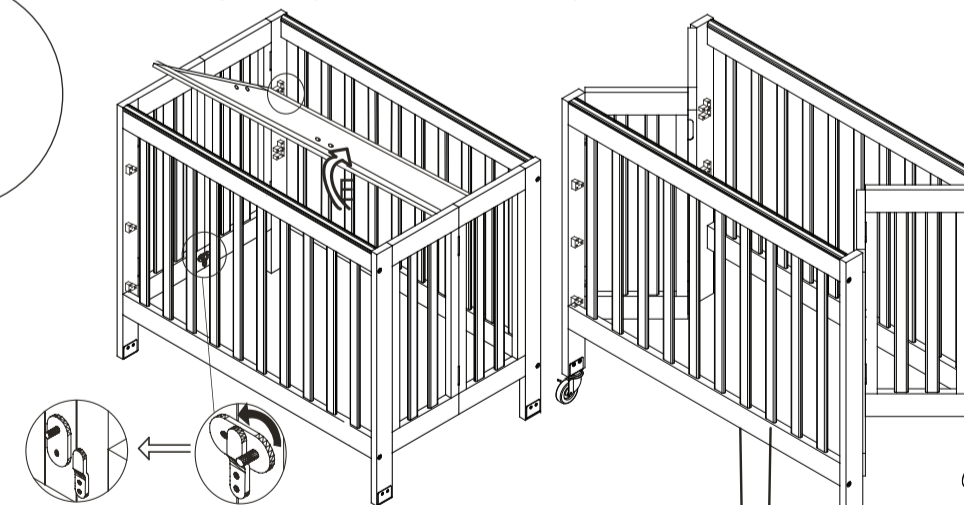
STEP 4

Put the mattress support(E) in the double plastic holder on the headboard according to your required height, and lay it down, lock with the locks under mattress board to the holes in headboards, then put mattress (G) on top. **Warning:** Please put the mattress support on the up height only for newborn baby.



STEP 5

Assemble casters (g&h) to the leg bottoms on the leg on headboard (A & B) by Wrench(f).



STEP 6

Follow bellow to fold the crib:
1. take out the mattress board (E)
2. unlock the latch on the headboard
3. fold the crib

CARE AND MAINTENANCE

- ALWAYS STORE THE CRIB IN A CLEAN AND DRY PLACE.
- TO CLEAN YOUR CRIB, USE A SOFT DAMP CLOTH WITH A SMALL AMOUNT OF MILD SOAP, WIPE IMMEDIATELY WITH A DRY CLOTH.
- DO NOT USE ABRASIVES OR DETERGENT ON CRIB SURFACE.
- REGULARLY CHECK ALL SCREWS AND FITINGS TO ENSURE THEY ARE RIGHT.
- THE IDEAL BALANCE IS TO MAINTAIN THE TEMPERATURE AROUND 21° C(70F) AND THE RELATIVE HUMIDITY AT 40% TO PREVENT WARPING OR SPLITTING.